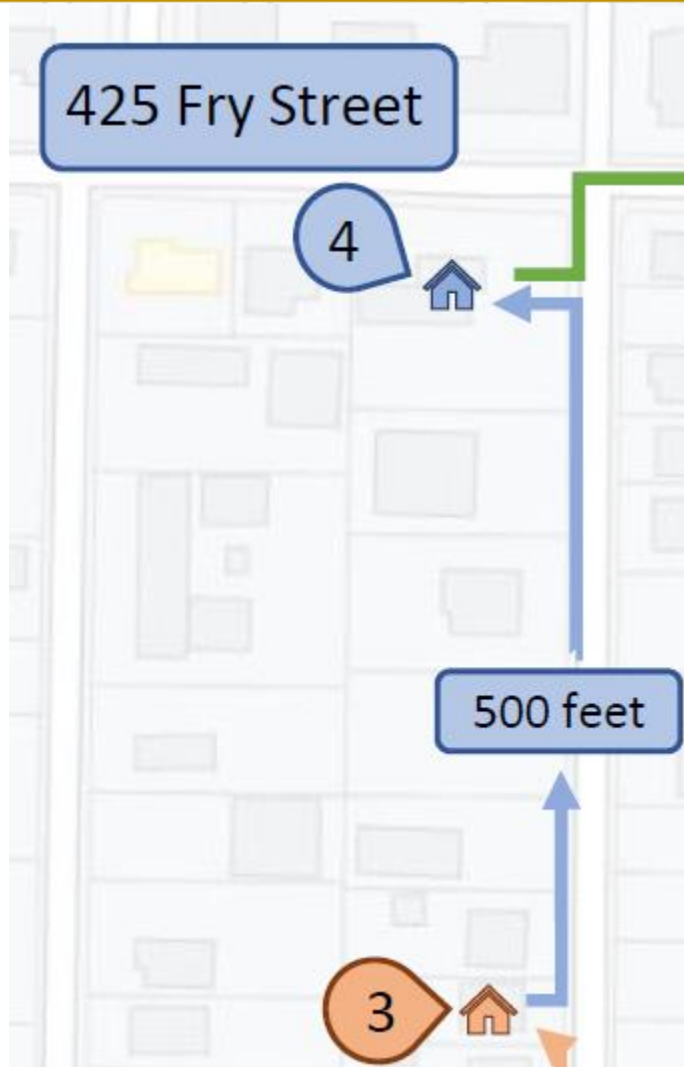


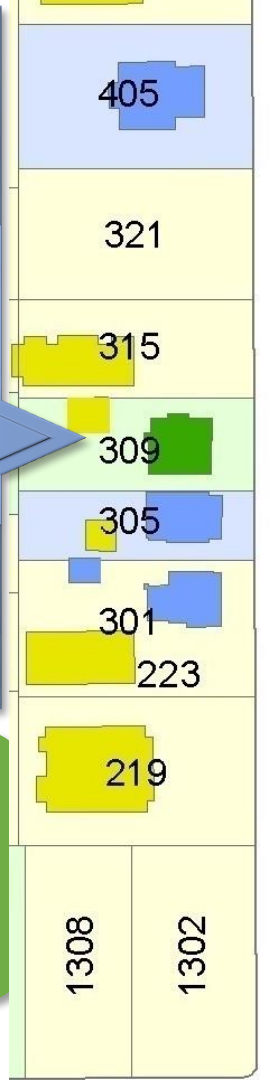
2021 Historic Denton Walking Tour Map



Continue north on Fry Street

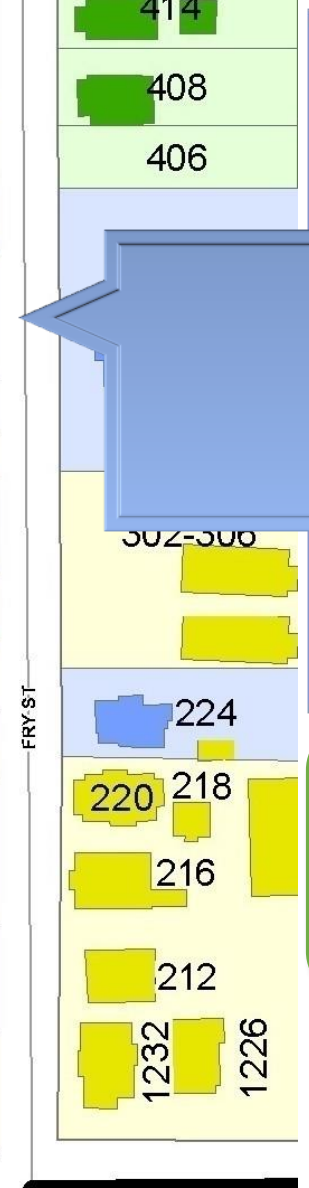
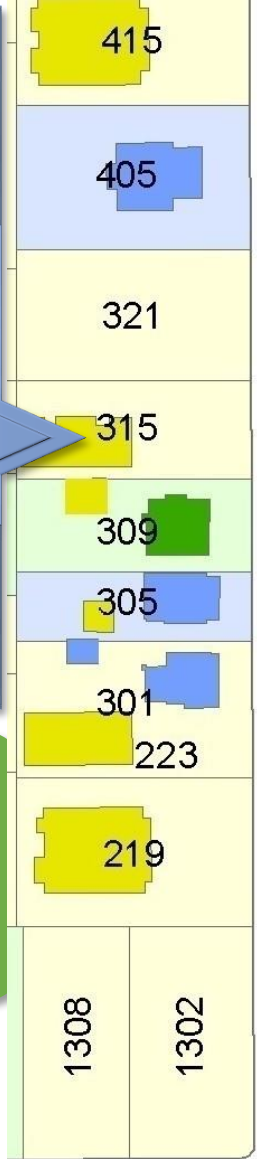


309 Fry – Ferdinand and Clara Hauslein
 Queen Anne influence – Built 1903
 Built by Robert Craig



302-306 Fry – Dr. H. G. Fleming, 1905
 Gibson-Moore Apartments
 Built 1982





315 Fry – Built 1914
Razed - In Memorial

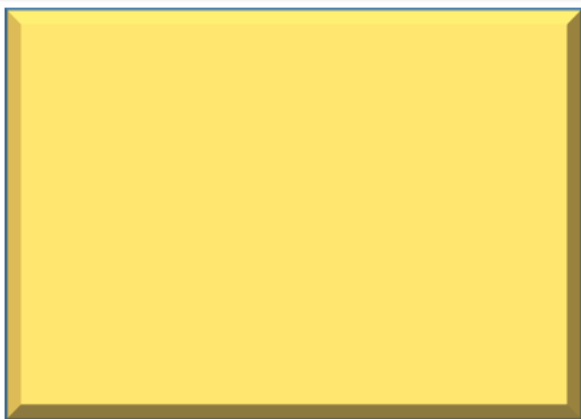
Oakridge Apartment, 2003

321 Fry – Built 1902
Razed - In Memorial



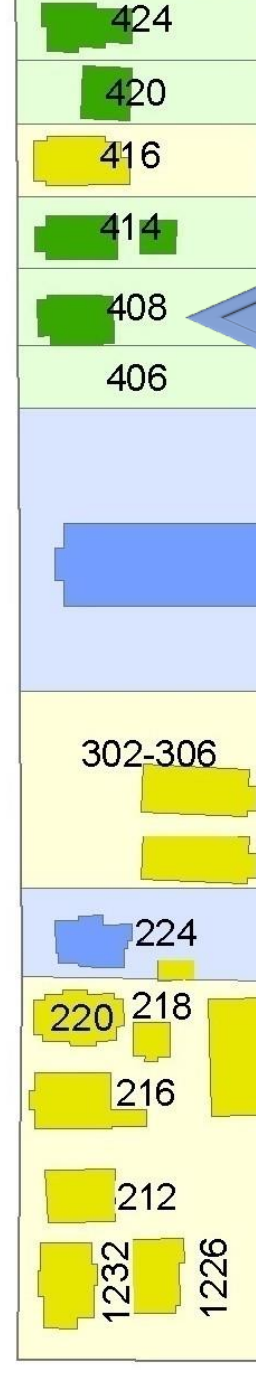
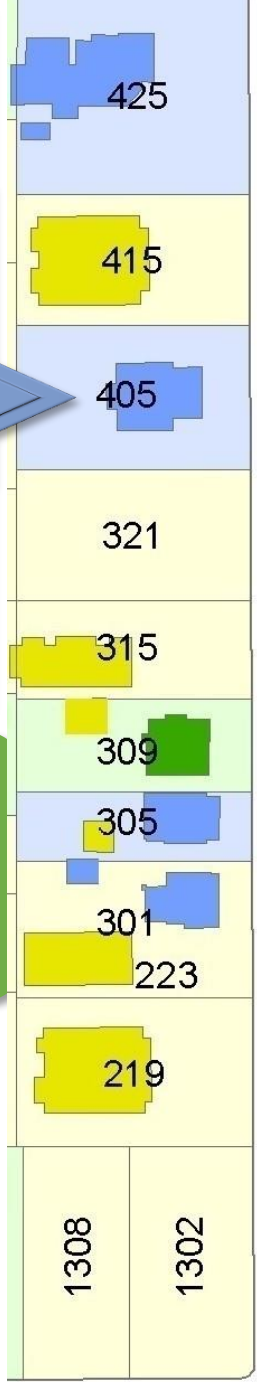


310 Fry – M. L. Henderson
 Built 1905
 Razed - In Memorial



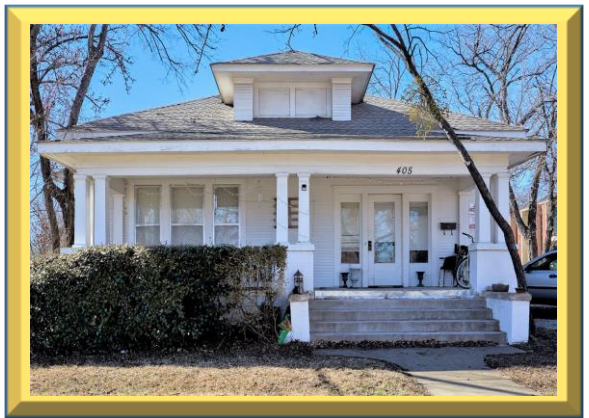
316 Fry – W. M. & Nannie Jones, 1922
 316 Fry Apartments, 1951
 High Level of Original Integrity





408 Fry – George Owens House
Mixed styles – Built 1906
Built by T. W. McCormick

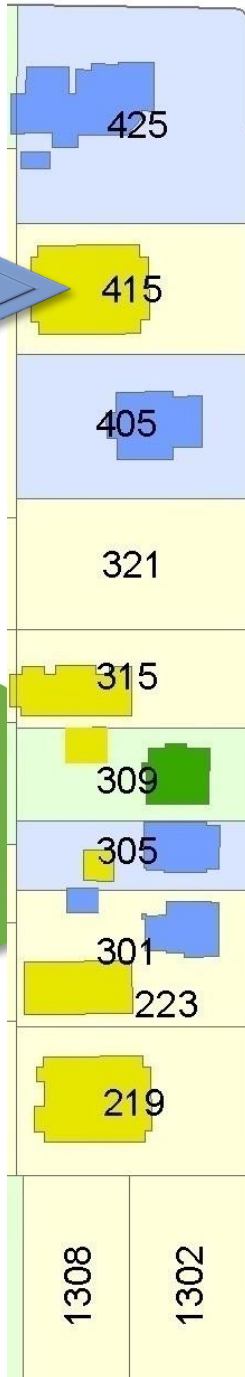
405 Fry – Professor J. P. Downer
Craftsman with Classical influence – Built 1914
High Level of Original Integrity
Built by H. F. Davidson



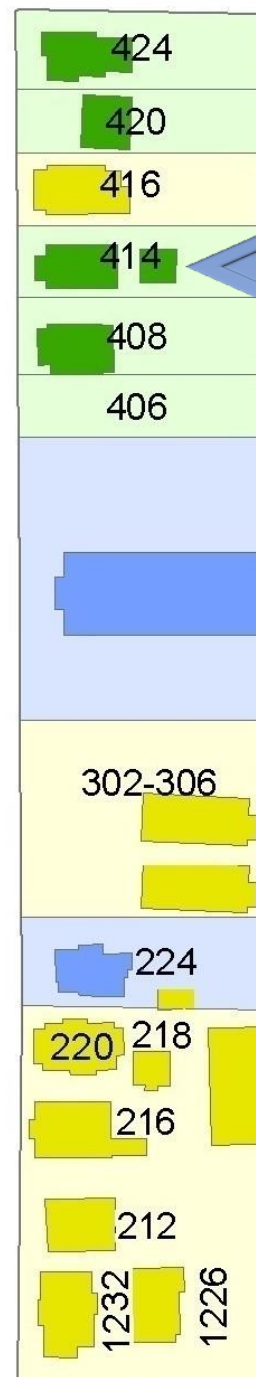


415 Fry – W. E. Waggoner
Mixed styles – Built 1895

Urban Eagle Apartments



FRY ST

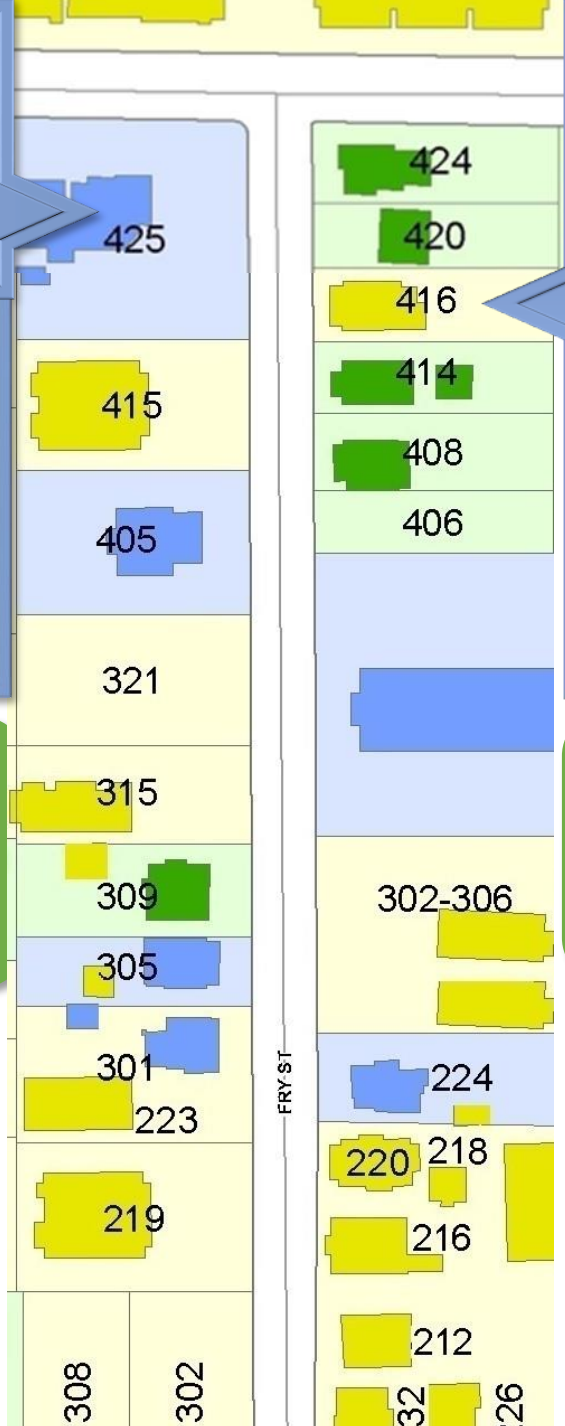


414 Fry – James McSpadden Magill House
Craftsman – Built 1919





425 Fry – Darwin & Ida Williams House
 Queen Anne – Built 1902
 High Level of Original Integrity
 Built by John Lawrence



416 Fry – V. W. & Maggie Sheppard House
 Craftsman influence – Built 1919





425 Fry – Darwin & Ida Williams House
Queen Anne – Built 1902
Built by John Lawrence

High Level of Original Integrity



HISTORIC DENTON

© 2021, Historic Denton, Inc.